



Reliabotics CO2 Cleaning Technology

Superior Surface Treatment



**SMALLER
FOOTPRINT**



LOW COST



ROBOT READY



**REPLACE WATER
CLEANING**



ECO-FRIENDLY

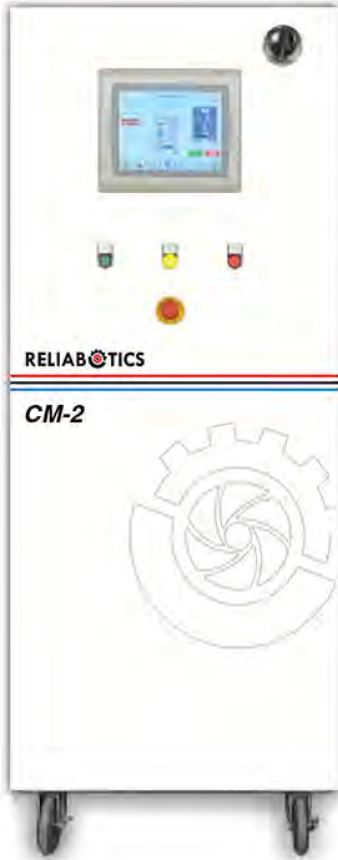


RECYCLED CO2



NO VOC's





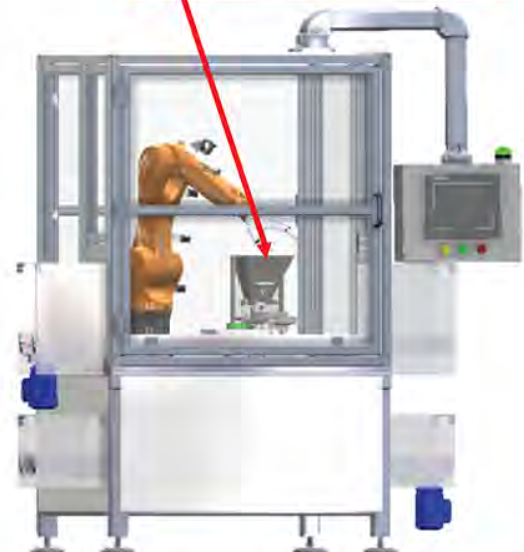
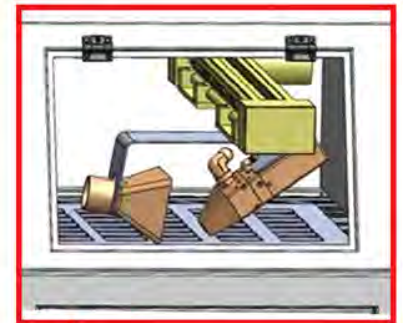
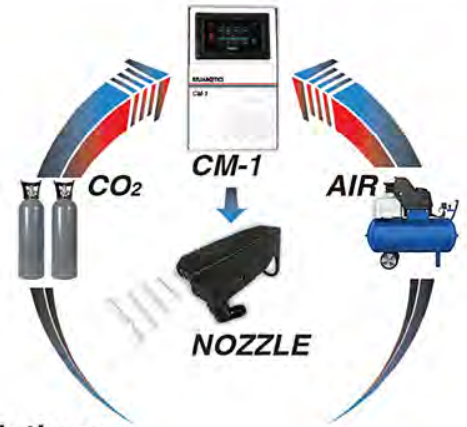
CM-2 Ideal for table top solutions

- Modular
- Network & IO Connectivity
- Integration Ready - Ideal for large scale integration
- Cleaning footprint ideal for large surfaces
- Uses CO2 gas bulk & micro bulk
- Width 27.25" - Height 70.5" - Length 42"



CM-1 Ideal for table top solutions

- Portable
- IO Connectivity
- Robot Ready - Ideal for Collaborative Robots
- Cleaning footprint ideal for small surfaces
- Uses beverage grade CO2 - small tanks & micro bulk
- W 9.5" - H 15" - L 13"



Technical Specifications of CO2 Cleaning Systems		
Requirements	CM-2	CM-1
Power Requirements	200-240 VAC 1-phase @ 50A	120 VAC 1-phase @ 15A
System Weight	550 lbs	20 lbs
Operating Temperature	-4 to 131 °F (-20° to 55°C)	-4 to 131 °F (-20° to 55°C)
CO2 Liquid Requirements	CO2 Gas @ 300-450 psi	CO2 Liquid @ 650-850 psi
Air Requirements	100 psi @ 160 cfm	100 psi @ 40 cfm

Fully integrated and cost-effective CO2 cleaning robotic work cells are available with options for inspection and material handling with built-in filtration for your custom applications:

- Surface Prep.
- Surface Cleaning
- Surface Finishing
- Automotive Paint Prep.
- Adhesive and Bonding Prep.



CE-3



Cleaning footprint up to 1 inch

CE-6



Cleaning footprint up to 2 inches

CK-6



Cleaning footprint up to 1 inch

CE-10



Cleaning footprint up to 5 inches

CE-20



Cleaning footprint up to 10 inches

Technical Specifications of CO2 Nozzles

Specifications	CE-3 / CK-3	CE-6 / CK-6	CE-10	CE-20
CO2 Consumption	12 lbs./hr.	24 lbs./hr.	40 lbs./hr.	80 lbs/hr.
Air Consumption	25 cfm (max)	40 cfm (max)	70 cfm (max)	140 cfm (max)
Cleaning Path	0.5-1 inch	1-2 inch	5 inch	10 inch
Operating Cost	~ \$4/hr.	~ \$7/hr.	~ \$13/hr.	~ \$25/hr.

Clean various contaminants without contact and damaging surfaces.

- Thin films
- Oil residues
- Fingerprints
- Sand dust
- Dust and dirt





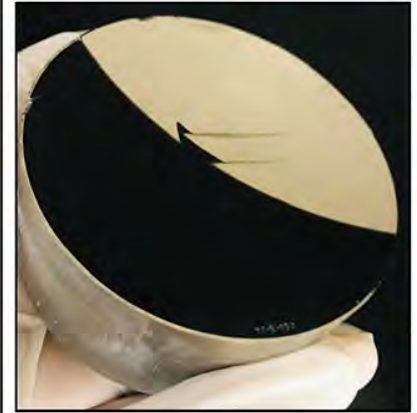
ABS Part
Before cleaning



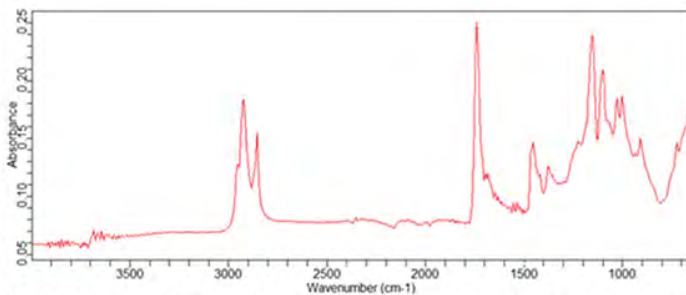
ABS Part
Power wash cleaning



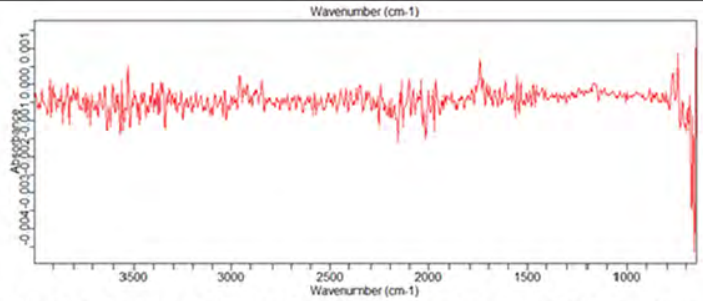
ABS Part
After CO2 Cleaning



Before and after cleaning
Ophthalmic Lens Mold



IR Spectrum obtained before CO2 cleaning detected oil traces



IR Spectrum obtained after CO2 cleaning detected no oil traces

Available options for the CO2 Cleaning Systems:

- Filters - Used for CO2 and Air supply
- Nozzles - Designed for different applications
- Plasma System - For increasing surface energy
- Chiller - Conditioning CO2 supply for improved performance
- Spare Parts - To minimize downtime during maintenance



Chiller



Contact Us:
24 Van Dyke Ave,
New Brunswick, NJ 08901
info@reliabotics.com
(732) 204-7940
RELIABOTICS.COM